

How To Use With The App

The Nextcloud environment has a desktop client app, which can also be used via the client app. The installation work of the client application involves a reboot. When installing, save the file you are editing, etc. and execute it.

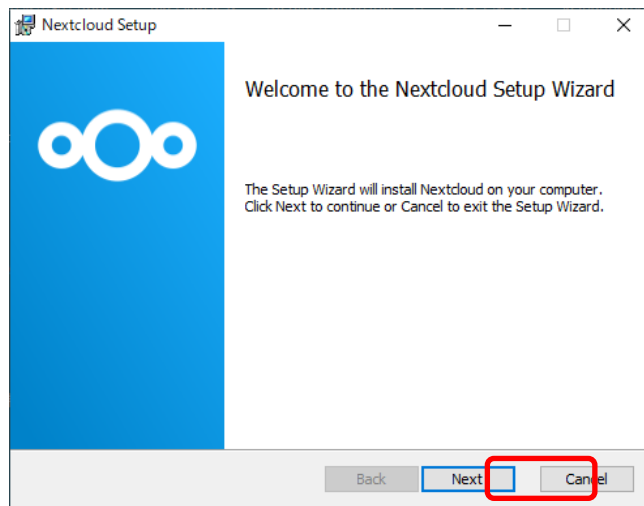
(1)Install

Download the installer from the following URL

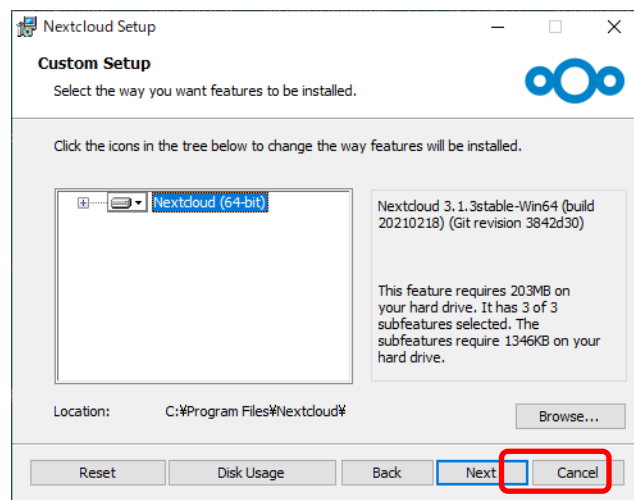
URL : <https://nextcloud.com/install/#install-clients>

Run the downloaded installer.

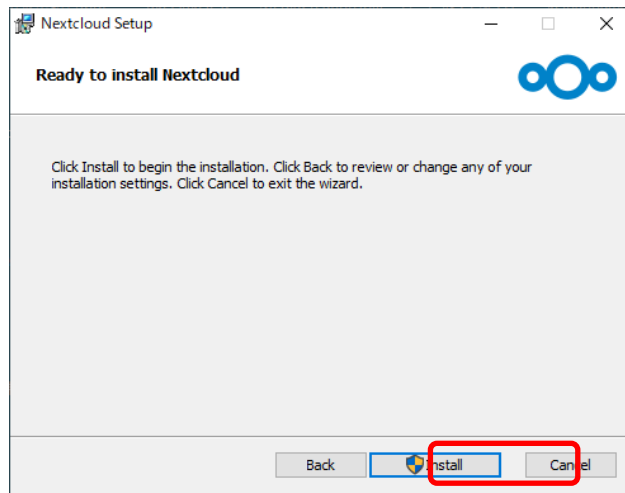
The installation will start, so click "Next".



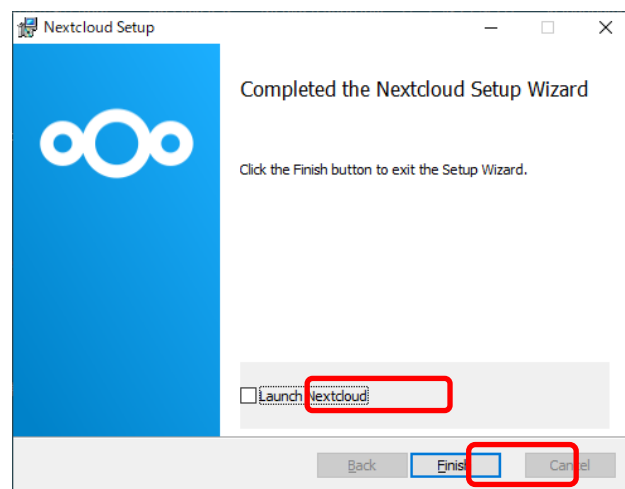
There is no need to change the settings, click "Next".



Click Install to perform the installation

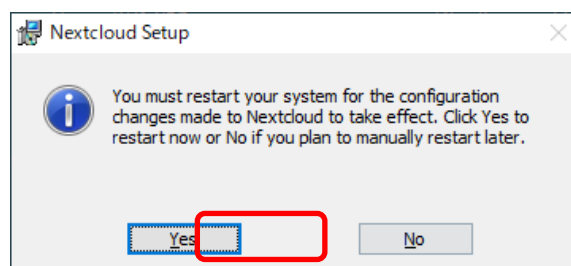


After the installation is complete, uncheck "Launch Nextcloud" and click "Finish".



A dialog prompting you to restart will be displayed. Click "Yes" to restart your computer.

※ Please save the file you are editing in advance.



(2)Settings

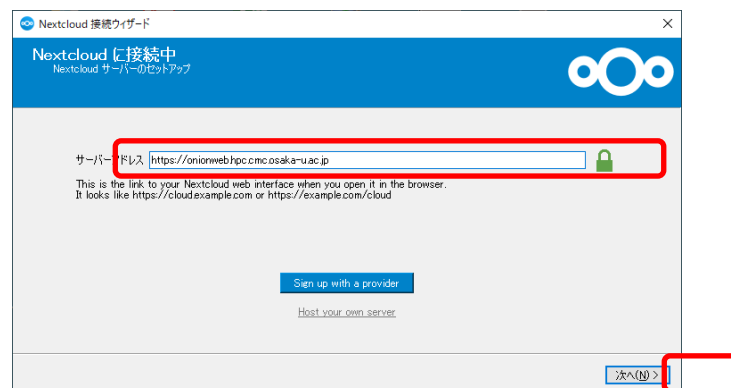
Make settings to connect to the Nextcloud server.

After restarting your computer, Nextcloud will start automatically and the following window will be appeared. Click "Log in to your Nextcloud".



Enter the following URL in Server Address and click 「次へ」.

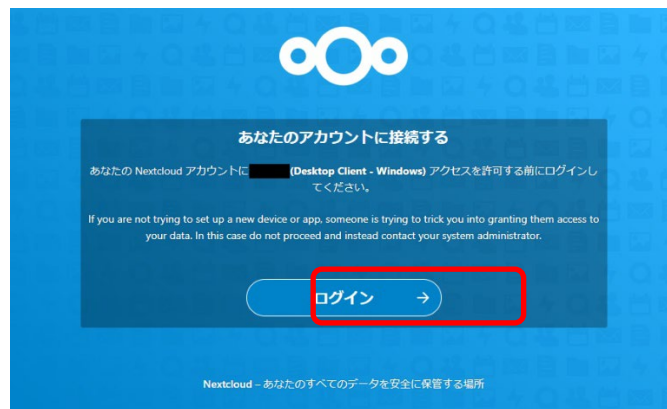
URL : <https://onionweb.hpc.cmc.osaka-u.ac.jp>



The following screen will be displayed, and the screen for authorizing authentication with a web browser will start automatically.



The following screen will be displayed on your web browser. Click "Login".



The following login screen will be displayed. Enter your user name and password and click "ログイン".



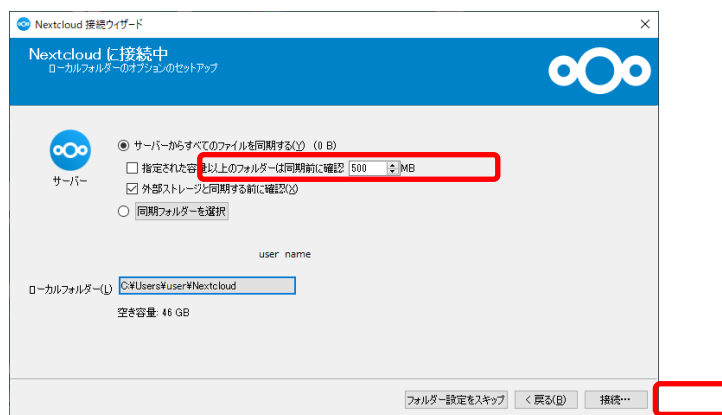
The following screen will be displayed. Click "アクセスを許可".



The following screen will be displayed. Follow the instructions on the screen to close the web browser.



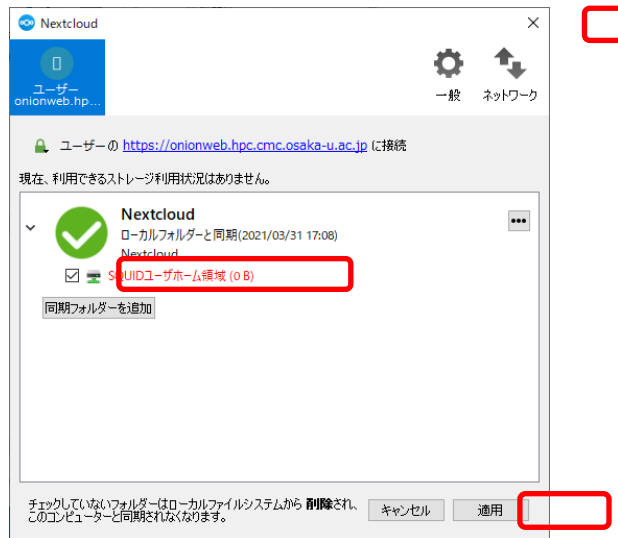
After returning to the application, the following screen will be displayed. Uncheck "指定された容量以上のフォルダーは同期前に確認" and click "接続 ...".



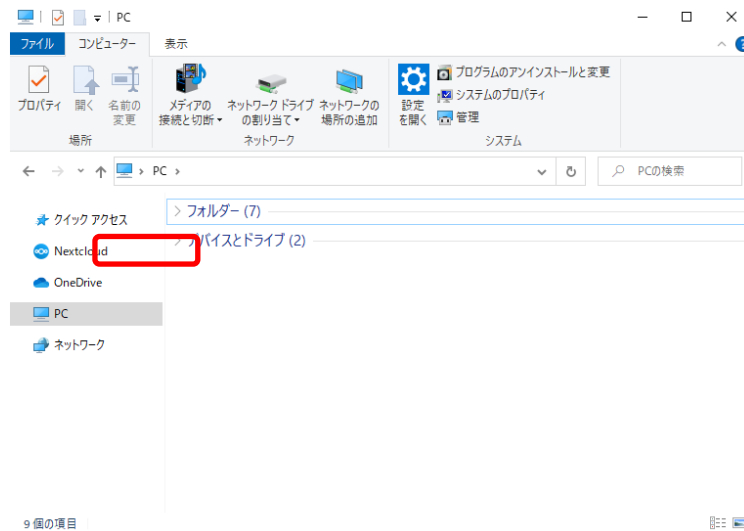
The Nextcloud settings screen will be displayed at the bottom right of the screen. Click the user name, and then click "設定" in the displayed menu.



The following screen will be displayed. Check "SQUID User Home Area" and click "Apply". After waiting for a while, synchronization will be completed, so close it with "x".



When you open Explorer, "Nextcloud" is added on the left side, click it.



Do not move or delete files whose file names start with ".".

Open the "SQUID ユーザーホーム領域". You can read and write files.

