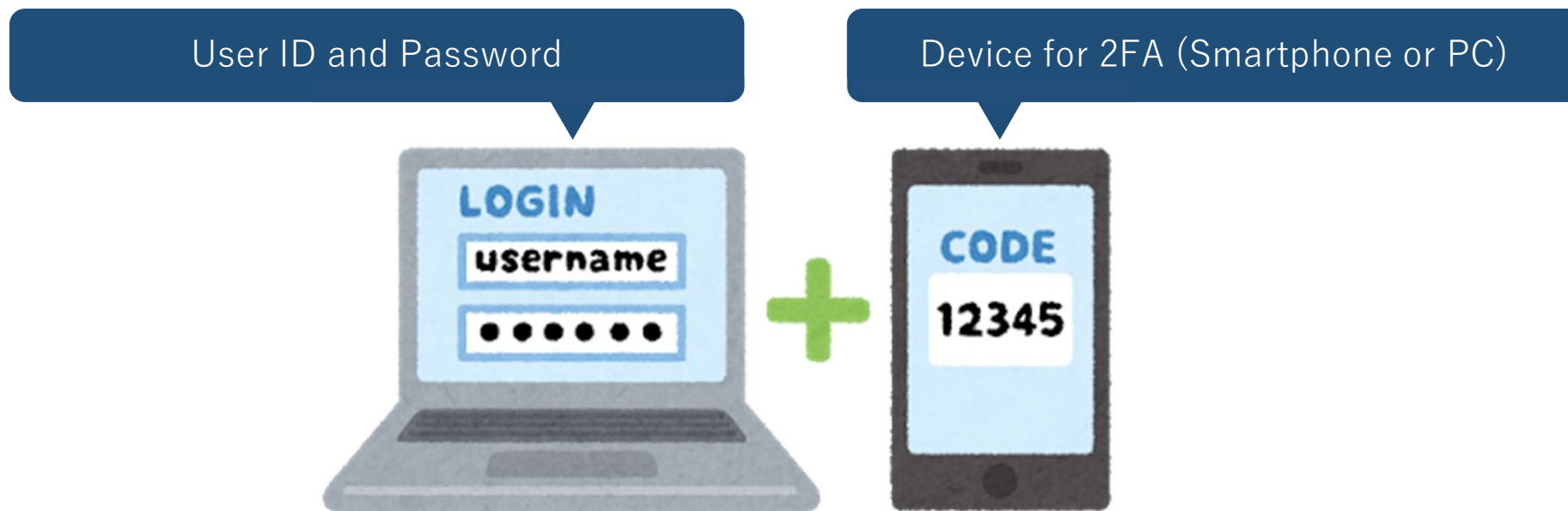


Getting started guide for logging in OCTOPUS

We adopt 2-factor Authentication(2FA) for OCTOPUS.

All users must prepare some device for 2FA.



User ID and Password

User ID

When your application is accepted, you will receive an approval email with User ID.

If you forget User ID, please contact us (system@cmc.osaka-u.ac.jp).

Password

If you forget Password, please initialize it from the following page:

<https://octopusportal.hpc.osaka-u.ac.jp/ouweb/>



Setting a device for 2FA

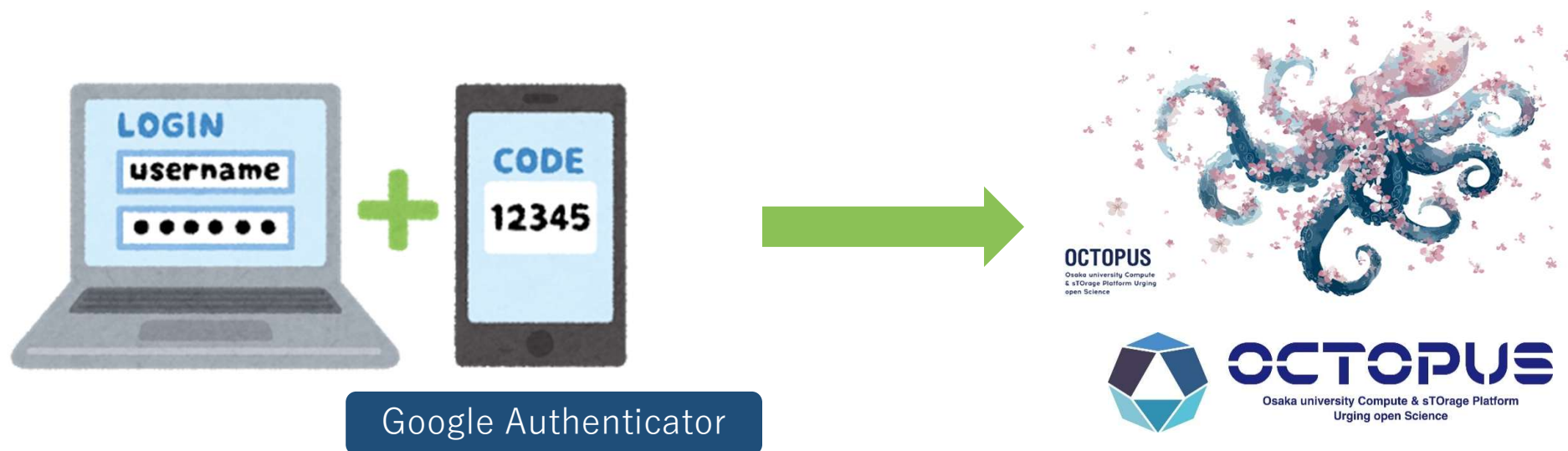
You can use your **smartphone** or **PC** as a device for 2FA.
Please install any one of the following applications:

OS	Application	Distributor
Android	Google Authenticator Microsoft Authenticator	Google Play Store
iOS	Google Authenticator Microsoft Authenticator	Apple App Store
Windows	WinAuth	Github
macOS	Step Two	Apple App Store



How to login OCTOPUS

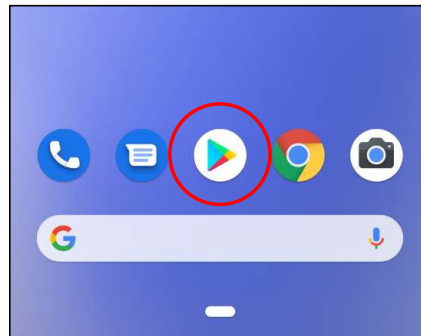
We introduce how to install **Google Authenticator** on a smartphone and how to log in OCTOPUS from Windows PC from the next page.



How to download Google Authenticator

1. Launch the app store on smartphone

for Android users: launch “Google Play”



for iPhone users: launch “App Store”

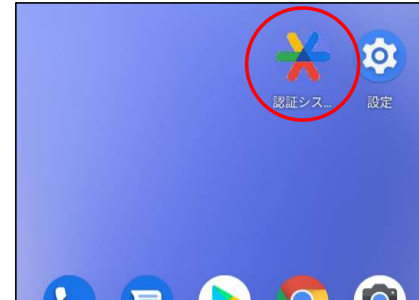
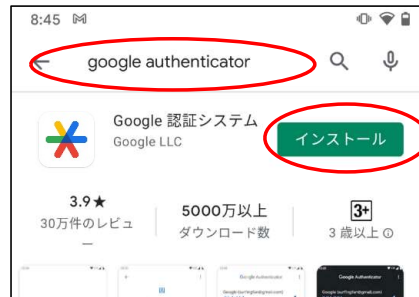


How to download Google Authenticator

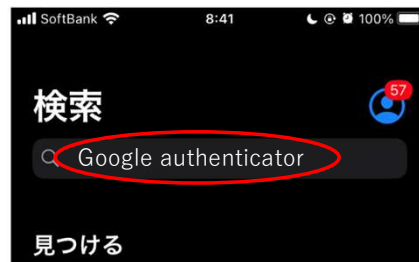
2. Install Google Authenticator

Search “Google Authenticator” and tap “install” button

for Android users

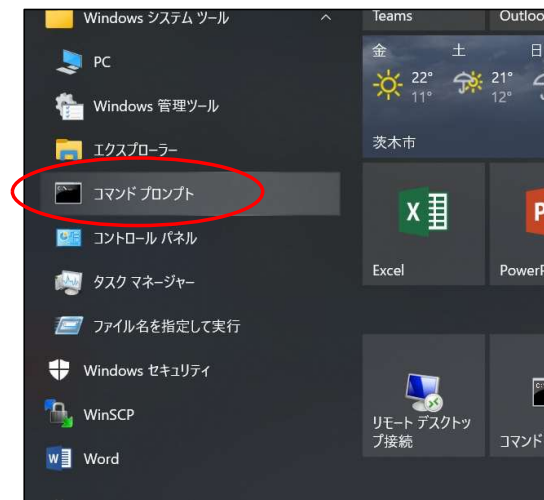
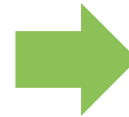
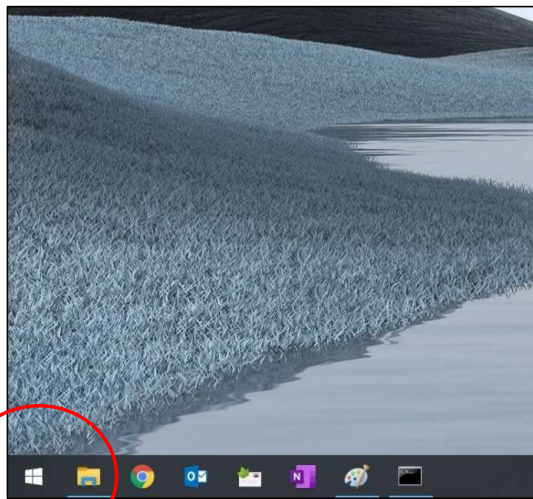


For iPhone users



How to login OCTOPUS

1. Launch “command prompt” on your Windows PC




How to login OCTOPUS

2. Connect OCTOPUS with “ssh” command

If your User ID is “a12345”, please enter like the following

```
ssh a12345@octopus.hpc.osaka-u.ac.jp
```



```
C:¥Users¥Name>ssh a12345@octopus.hpc.osaka-u.ac.jp
The authenticity of host 'octopus.hpc.osaka-u.ac.jp (133.1.65.167)' can't be established.
ECDSA key fingerprint is SHA256:oGHxik2ZKS6NWRReM9fgz9v9tO6sgvBdKFhUEHuNcV3k.
Are you sure you want to continue connecting (yes/no)? yes
Warning: Permanently added 'octopus.hpc.osaka-u.ac.jp,133.1.65.167' (ECDSA) to the list of
known hosts.
Password: *****
```

Enter “yes”

Please enter your password


How to login OCTOPUS

3. Command prompt displays QR code. Please keep this code and proceed to the next page.

Initialize google-authenticator

Warning: pasting the following URL into your browser exposes the OTP secret to Google:

https://www.google.com/chart?chs=200*200&chld=M|0&ht=qr&otpauth://totp/user1@octopus.hpc.osaka-u.ac.jp%3Fsecret%3DDXXXXXXXXCXI%26issuer%3Doctopus.hpc.osaka-u.ac.jp



Your new secret key is: XXXXXXXXXXXX

Enter code from app (-1 to skip): -1
Code confirmation skipped
Your emergency scratch codes are:

* If your QR code collapsed or was removed, please access this URL.



How to set 2FA

1. Launch Google Authenticator on your smartphone



How to set 2FA

2. Scan a QR code on command prompt



Initialize google-authenticator

Warning: pasting the following URL into your browser exposes the OTP secret to Google:

https://www.google.com/chart?chs=200*200&chld=M|0&cht=qr&otpauth://totp/user1@octopus.hpc.osaka-u.ac.jp%3Fsecret%3DDXXXXXXXXXCLI%26issuer%3Doctopus.hpc.osaka-u.ac.jp



Your new secret key is: XXXXXXXXXXXX

Enter code from app (-1 to skip): -1

Code confirmation skipped

Your emergency scratch codes are:



How to set 2FA

If you can not scan QR code, please input “your new secret key” as a number code



Initialize google-authenticator

Warning: pasting the following URL into your browser exposes the OTP secret to Google:

https://www.google.com/chart?chs=200*200&chld=M|0&cht=qr&otpauth://totp/user1@octopus.hpc.osaka-u.ac.jp%3Fsecret%3DDXXXXXXXXXCLI%26issuer%3Doctopus.hpc.osaka-u.ac.jp



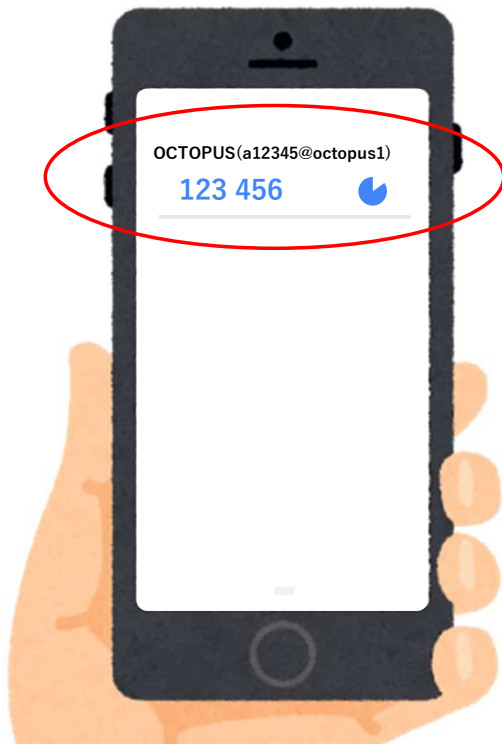
Your new secret key is: XXXXXXXXXXXX

Enter code from app (-1 to skip): -1
Code confirmation skipped
Your emergency scratch codes are:



How to set 2FA

3. You can get One-time password



Initial setting is finished

Enter as the following on command prompt. Initial setting is finished on this page.

Your new secret key is: XXXXXXXXXXXXX
Enter code from app (-1 to skip): **-1**

Enter "-1"

Code confirmation skipped
Your emergency scratch codes are:
ok? Hit enter: (**Enter key**)

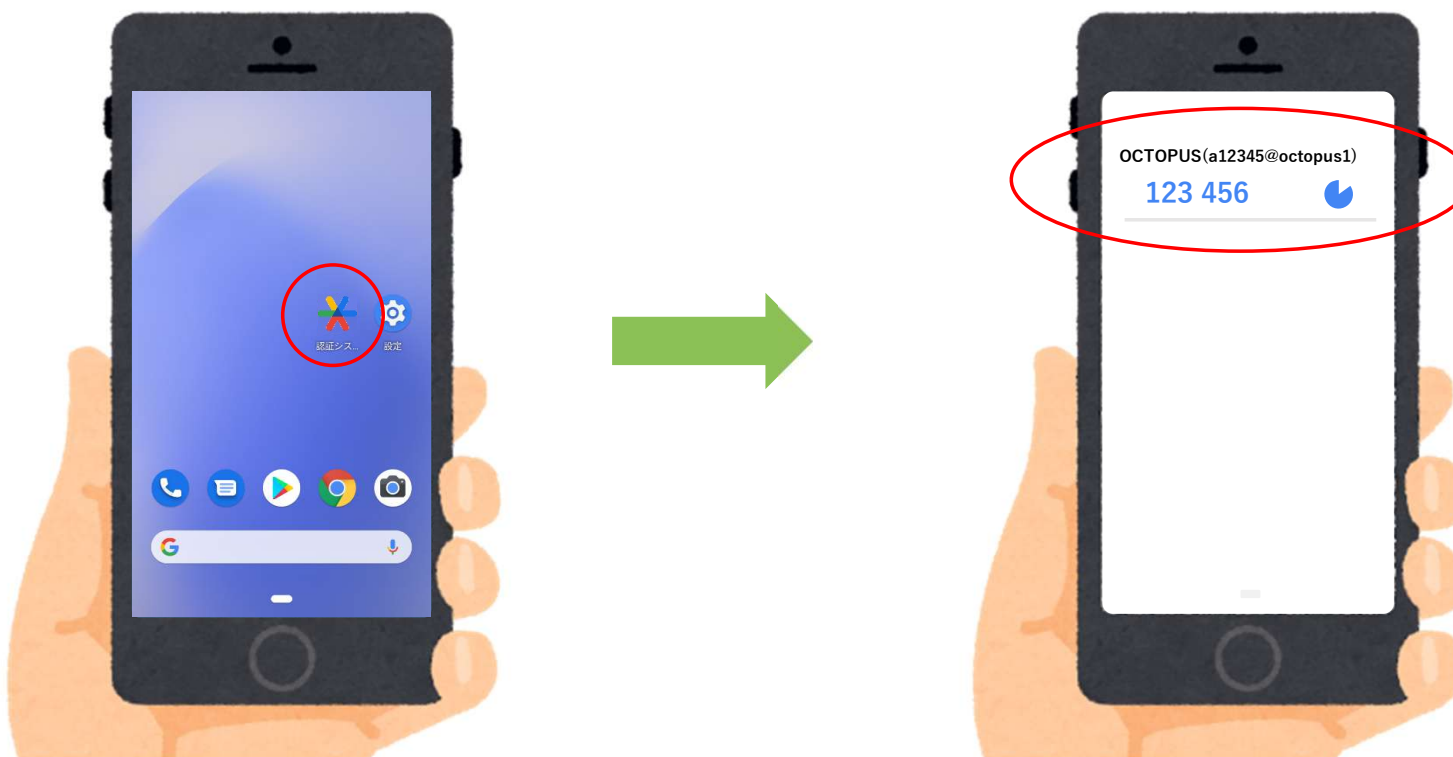
Push "Enter key" and you automatically log out OCTOPUS



How to login

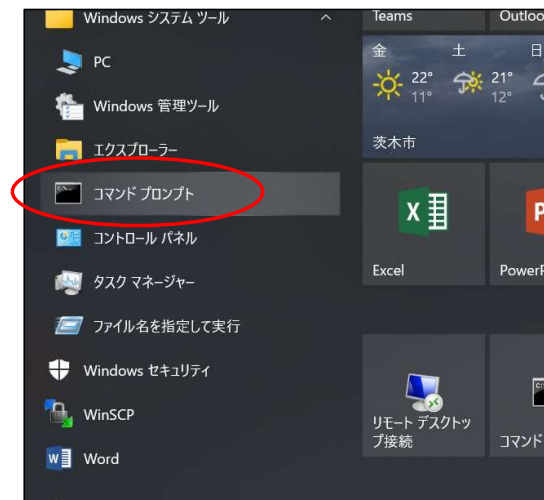
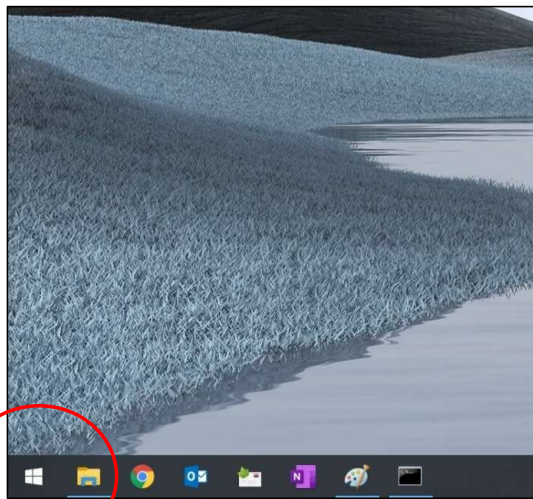
Check One-time password

Launch Google Authenticator on a smartphone. Check 6 digits number as a one-time password for OCTOPUS.



How to login OCTOPUS

1. Launch “command prompt” on your Windows PC




How to login

How to login OCTOPUS

2. Connect OCTOPUS with “ssh” command

If your User ID is “a12345”, please enter like the following

```
ssh a12345@octopus.hpc.osaka-u.ac.jp
```



```
C:¥Users¥Name>ssh a12345@octopus.hpc.osaka-u.ac.jp
The authenticity of host 'octopus.hpc.osaka-u.ac.jp (133.1.65.167)' can't be established.
ECDSA key fingerprint is SHA256:oGHxik2ZKS6NWRReM9fgz9v9tO6sgvBdKFhUEHuNcV3k.
Are you sure you want to continue connecting (yes/no)? yes
Warning: Permanently added 'octopus.hpc.osaka-u.ac.jp,133.1.65.167' (ECDSA) to the list of
known hosts.
Password: *****
```

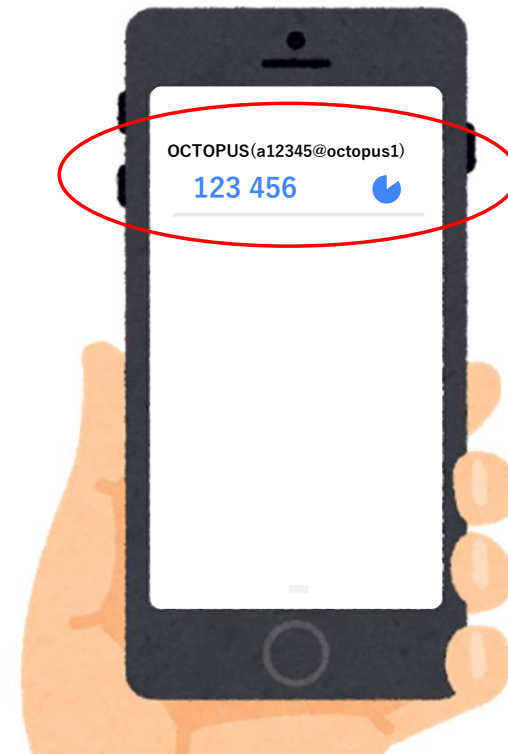
Enter “yes”

Please enter your password

How to login OCTOPUS

3. Enter 6 digits number of smartphone as verification code

Verification code: 123456



How to login

How to login OCTOPUS

4. Finished logging in OCTOPUS

This system is not registered to Red Hat Insights. See
<https://cloud.redhat.com/>
To register this system, run: `insights-client --register`

Last login: Fri Apr 30 09:28:04 2021 from 133.1.4.111
[a12345@octopus1 ~]\$



If you have some problem

Please contact the following:

**HPC team, D3 center
The University of Osaka
system@cmc.osaka-u.ac.jp**

**Inquiry WEB form
https://www.hpc.cmc.osaka-u.ac.jp/en/support/contact/auto_form/**